

Skyggerelieff 1x1 m

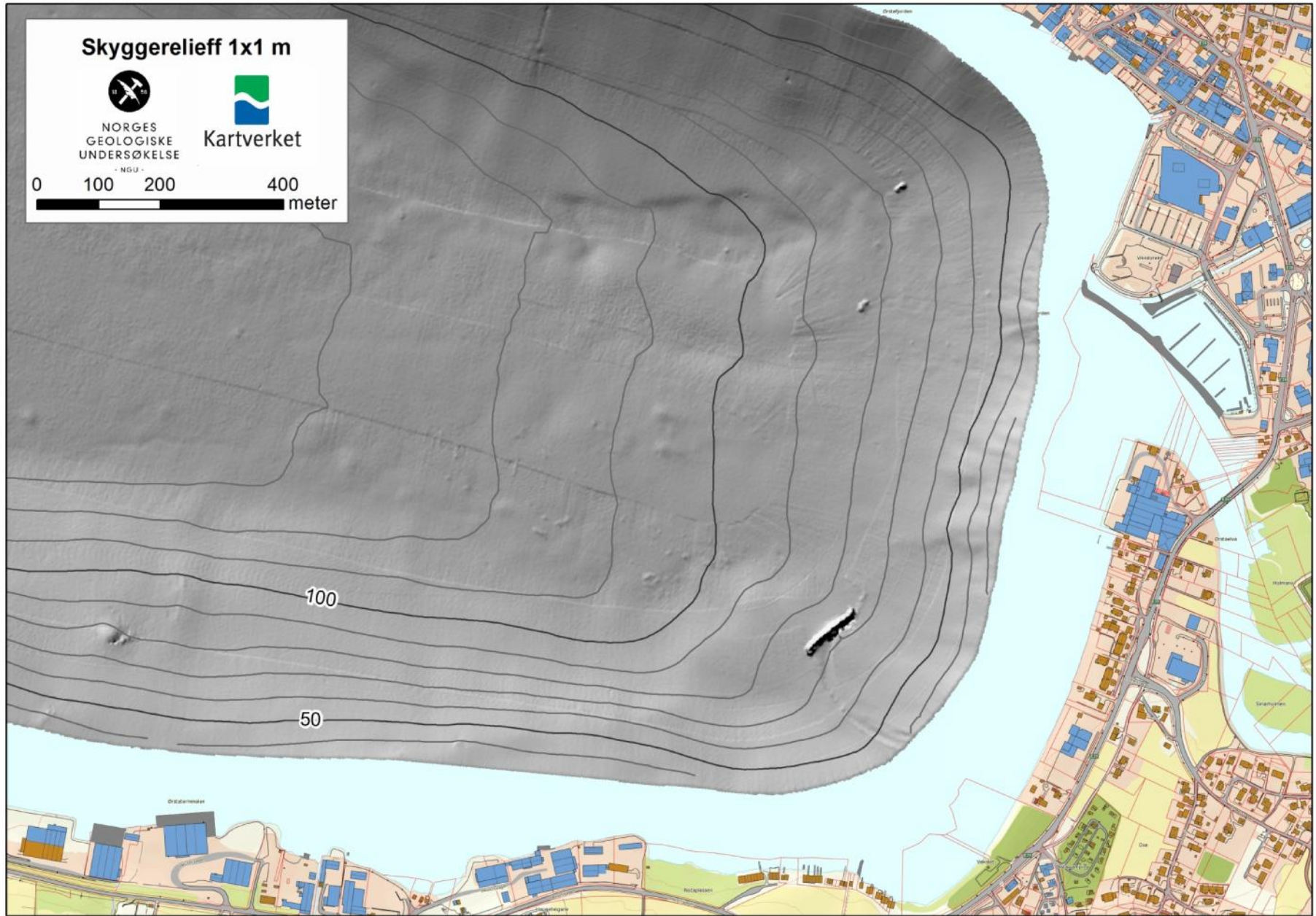


NORGES
GEOLOGISKE
UNDERSØKELSE
- NGU -



Kartverket

0 100 200 400
meter



Marine grunnkart, Søre Sunnmøre



Marine Grunnkart Møre og Romsdal

Runde Miljøsentert

Hareid Kommune

Herøy Komune

Ulstein Kommune

Sande Kommune

Vanylven Kommune

Møre og Romsdal Fylkeskommune

Fylkesmannen i Møre og Romsdal

Norges Geologiske undersøkelser (NGU)

Statens kartverk

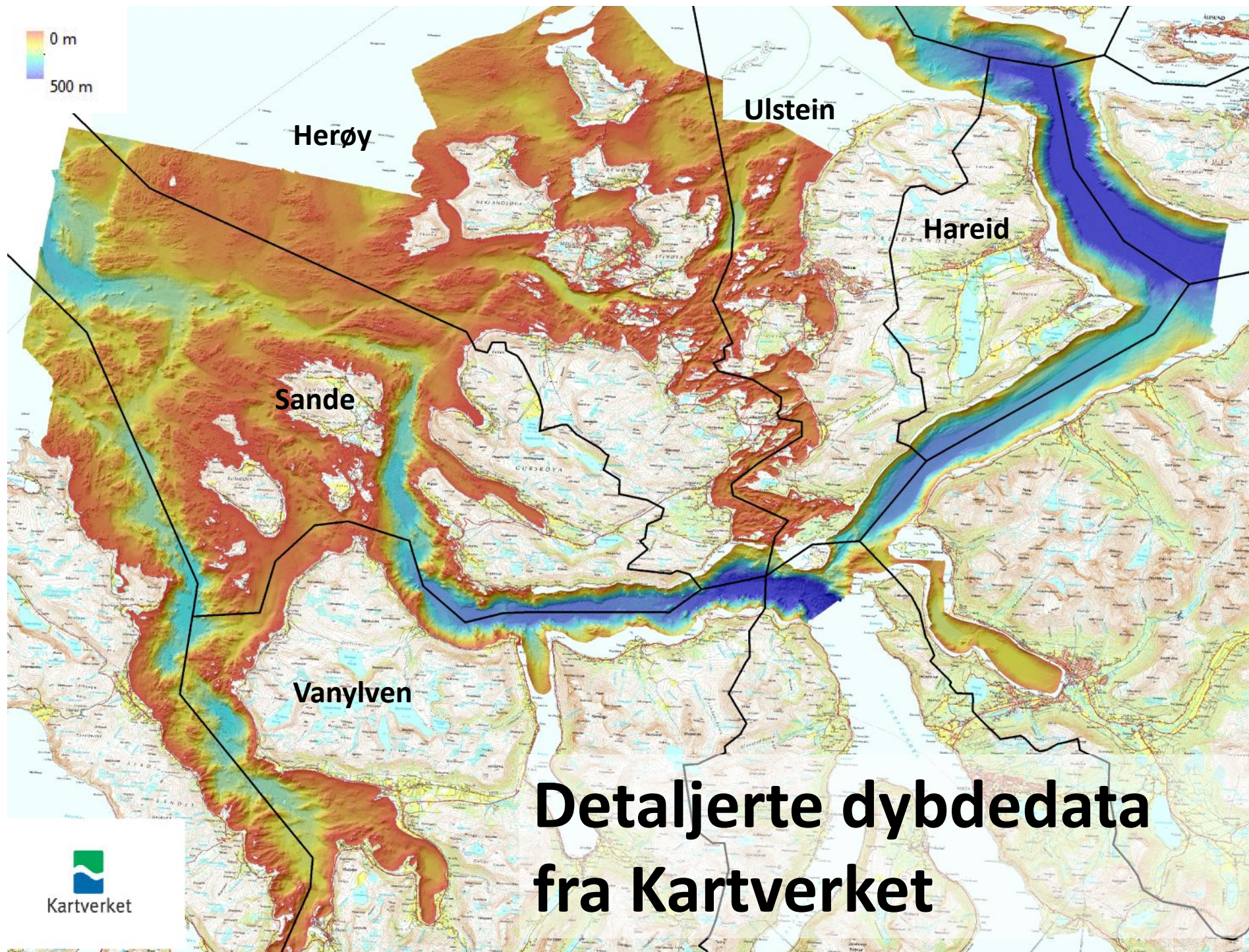
Høgskolen i Ålesund

Norges Forskingsråd

Forskingforum Møre

Bioforsk Tingvoll

Møreforsking



Herøy

Ulstein

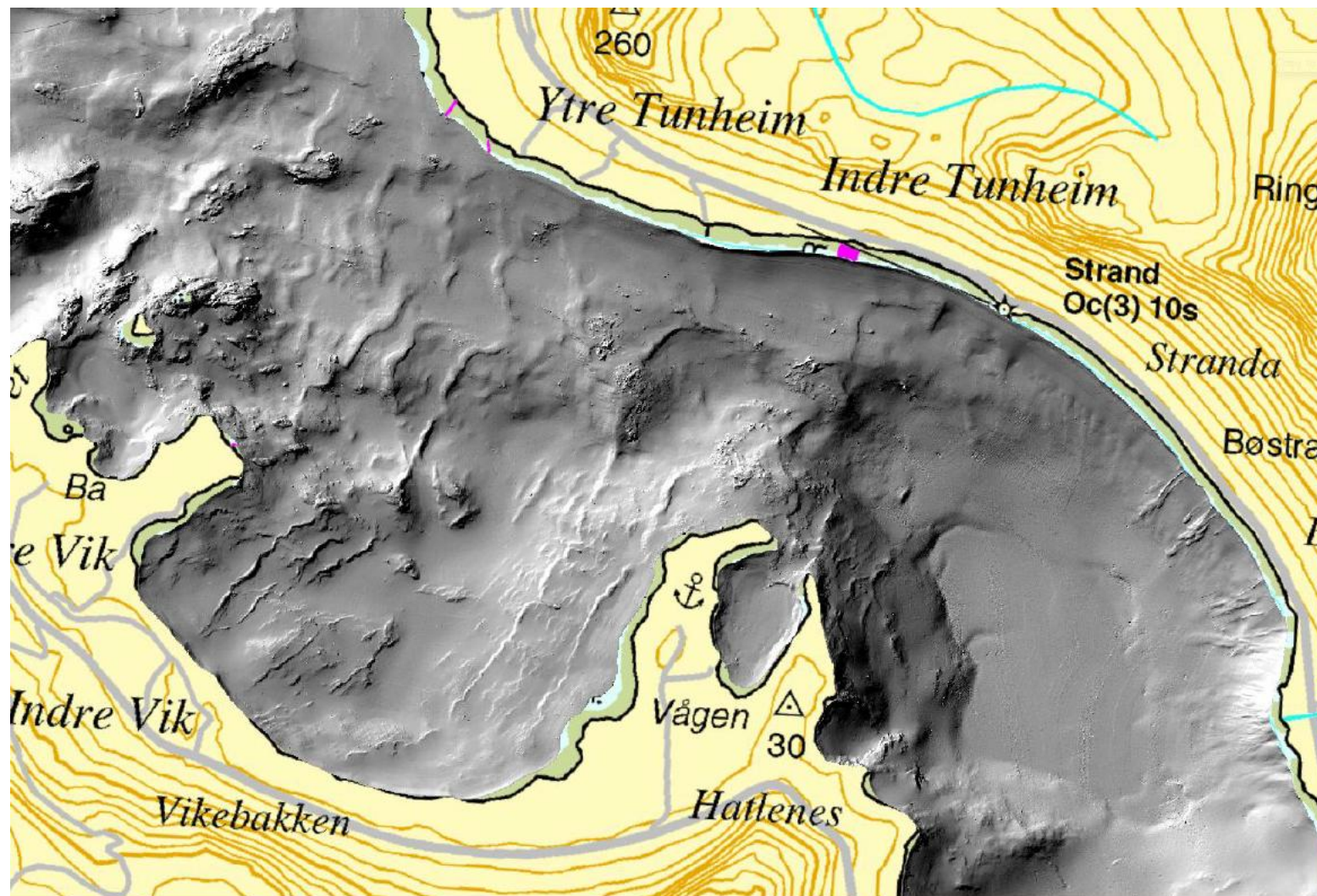
Hareid

Sande

Vanylven

**Detaljerte dybdedata
fra Kartverket**



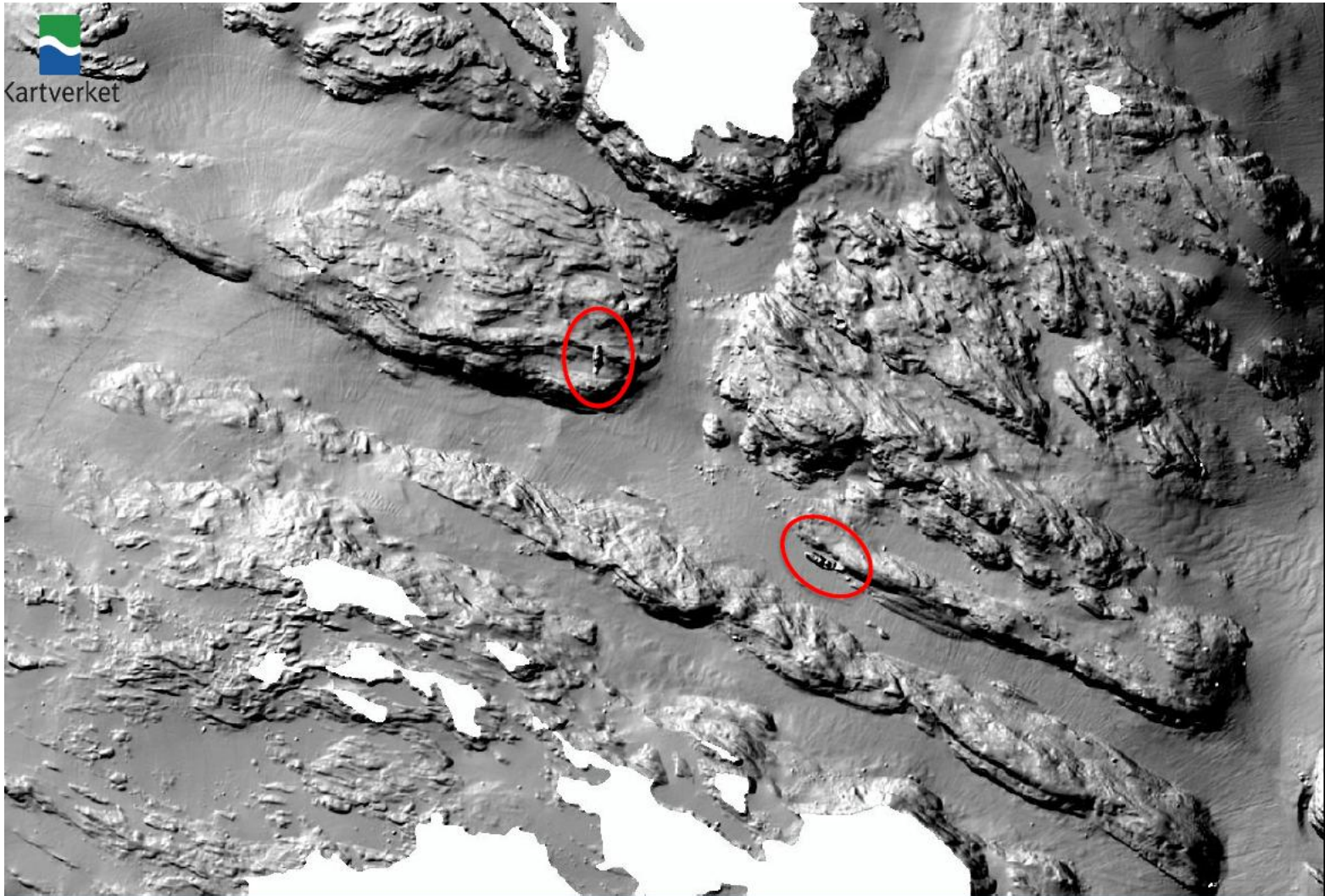


500 m



NORGES GEOLOGISKE UNDERSØKELSE
- NGU -

Detaljerte dybdedata
fra Kartverket



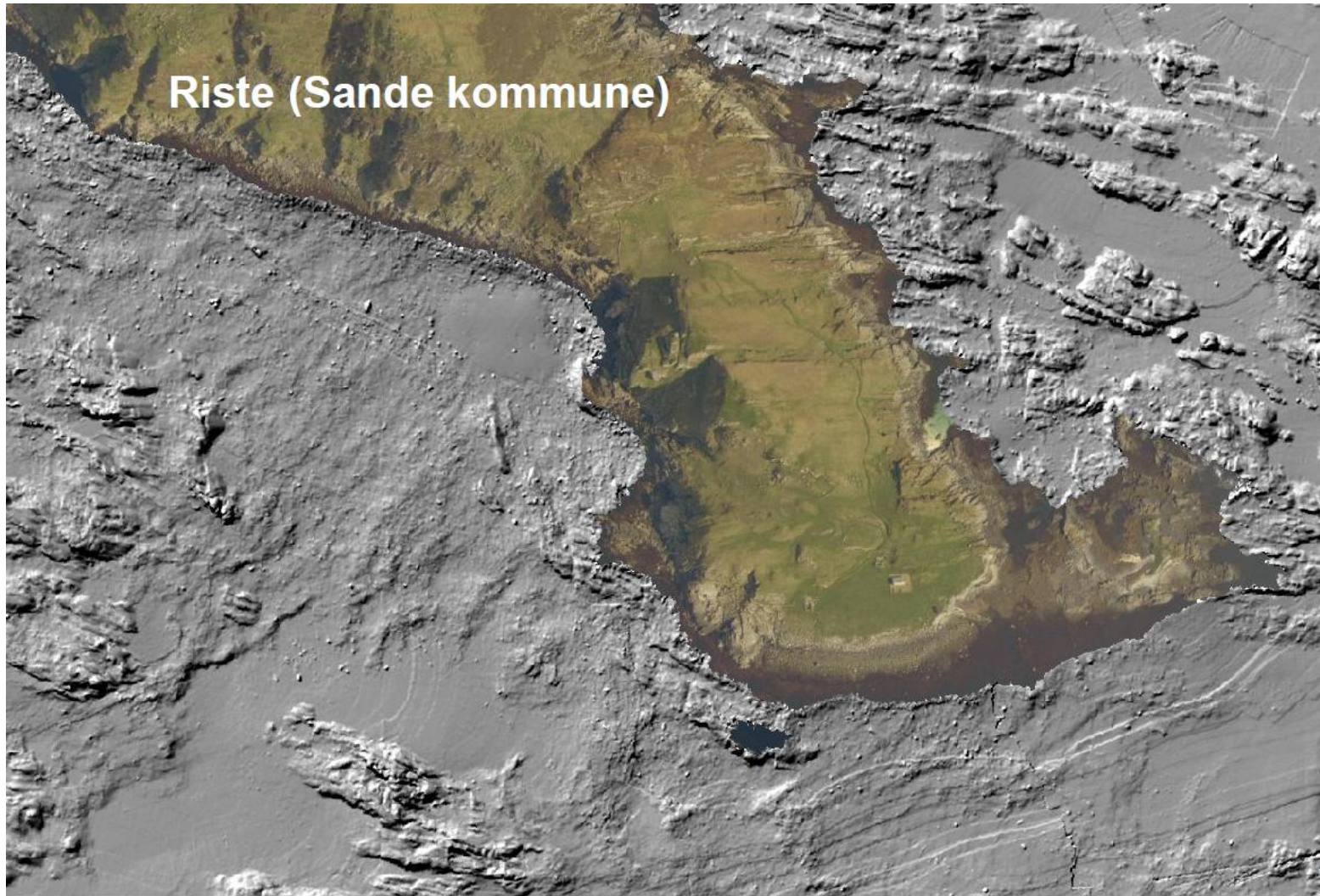
Kartverket



NORGES GEOLOGISKE UNDERSØKELSE

- NGU -

Riste (Sande kommune)



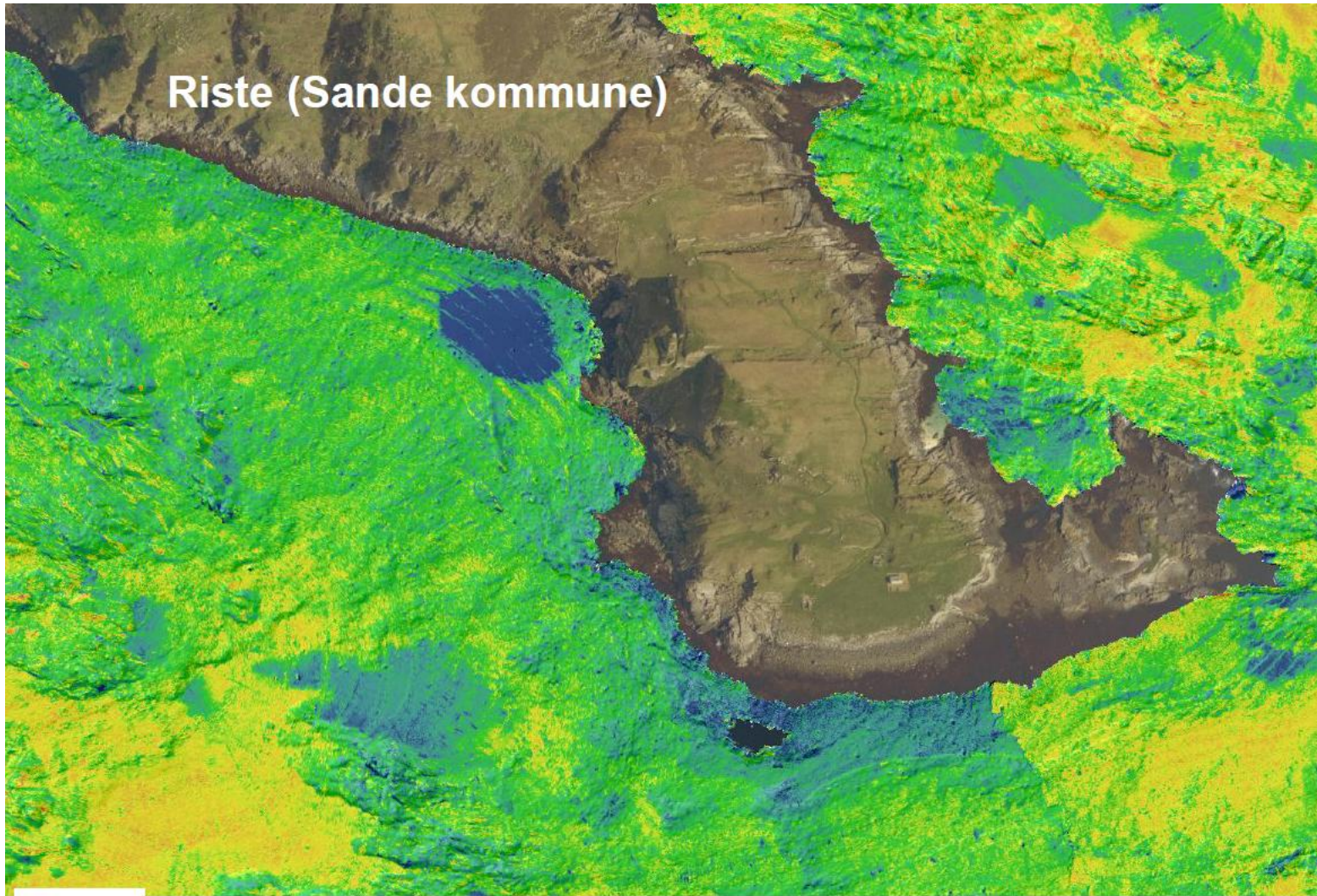
150 m



NORGES GEOLOGISKE UNDERSØKELSE
- NGU -

Detaljerte dybdedata
fra Kartverket

Riste (Sande kommune)



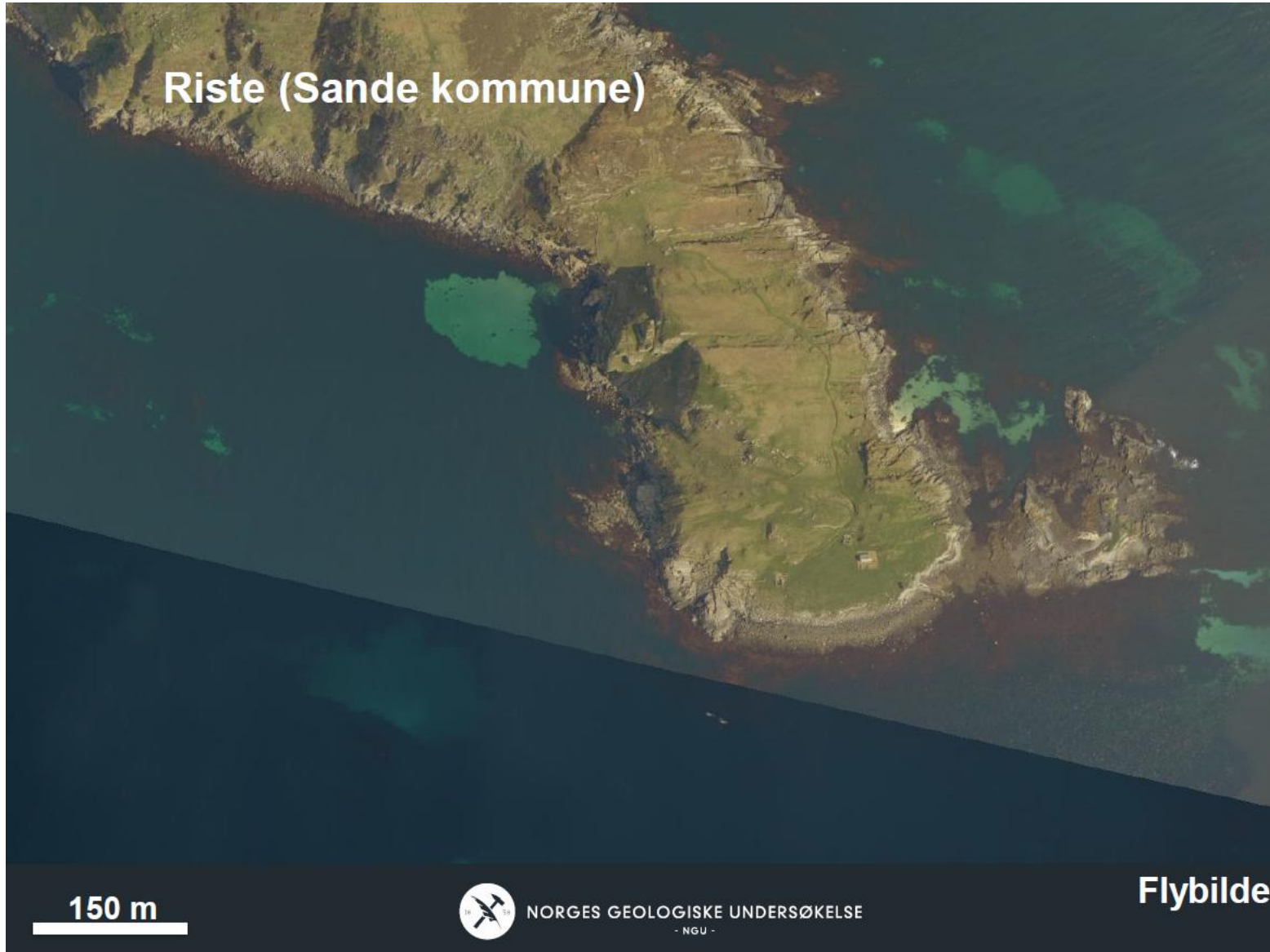
150 m



NORGES GEOLOGISKE UNDERSØKELSE
- NGU -

Detaljerte hardhetsdata
fra Kartverket

Riste (Sande kommune)



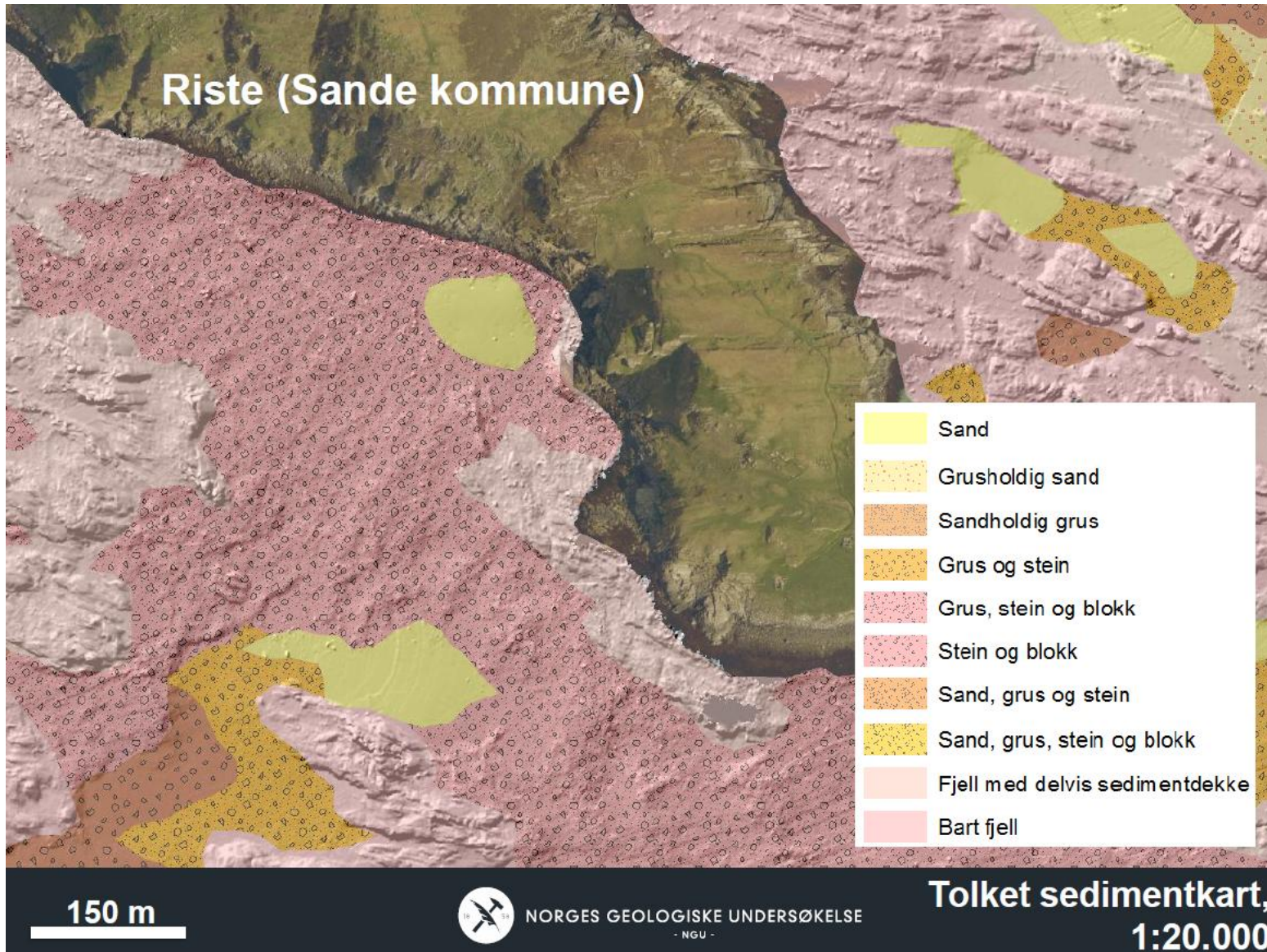
150 m



NORGES GEOLOGISKE UNDERSØKELSE
- NGU -

Flybilde

Riste (Sande kommune)

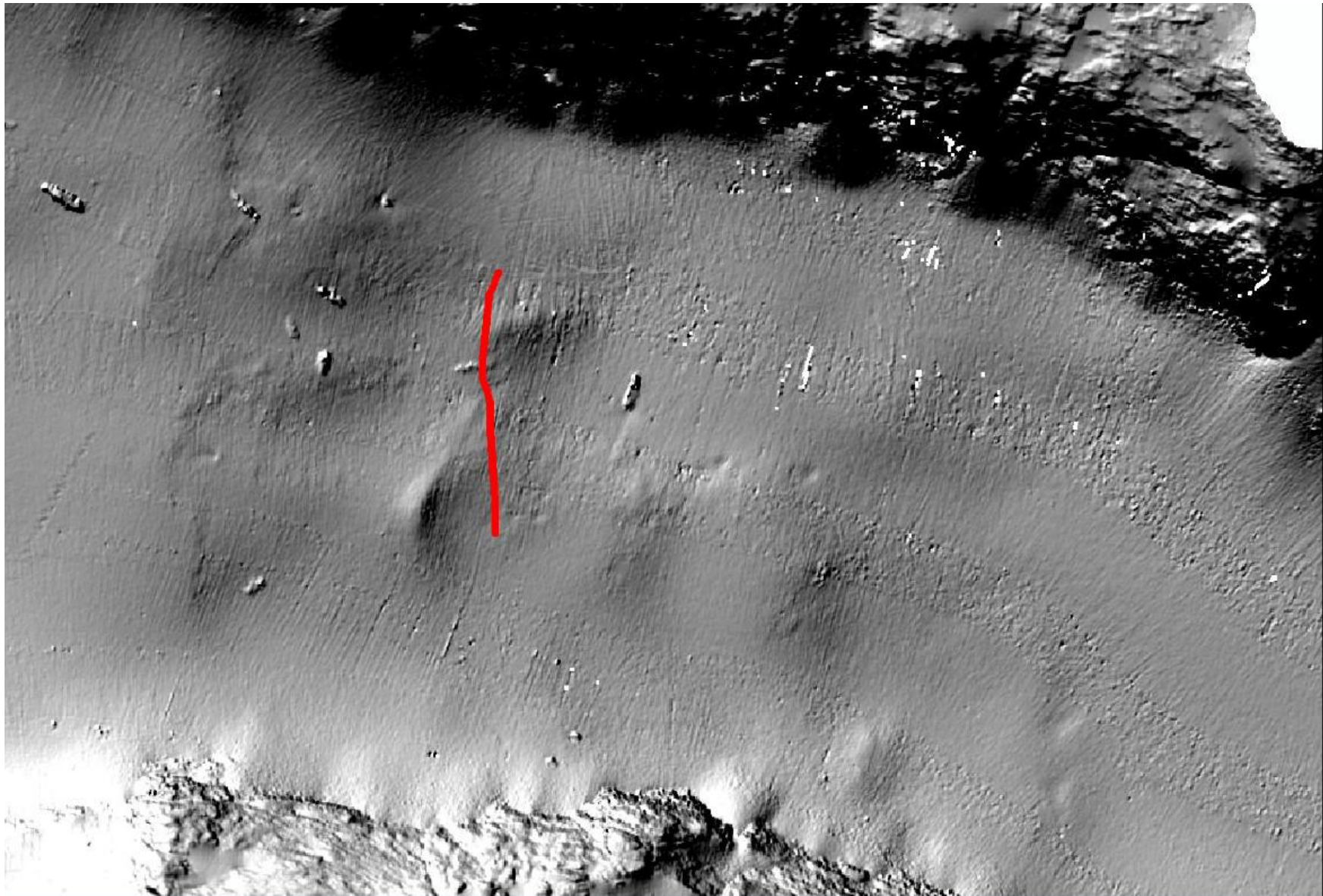


150 m



NORGES GEOLOGISKE UNDERSØKELSE
- NGU -

Tolket sedimentkart,
1:20.000

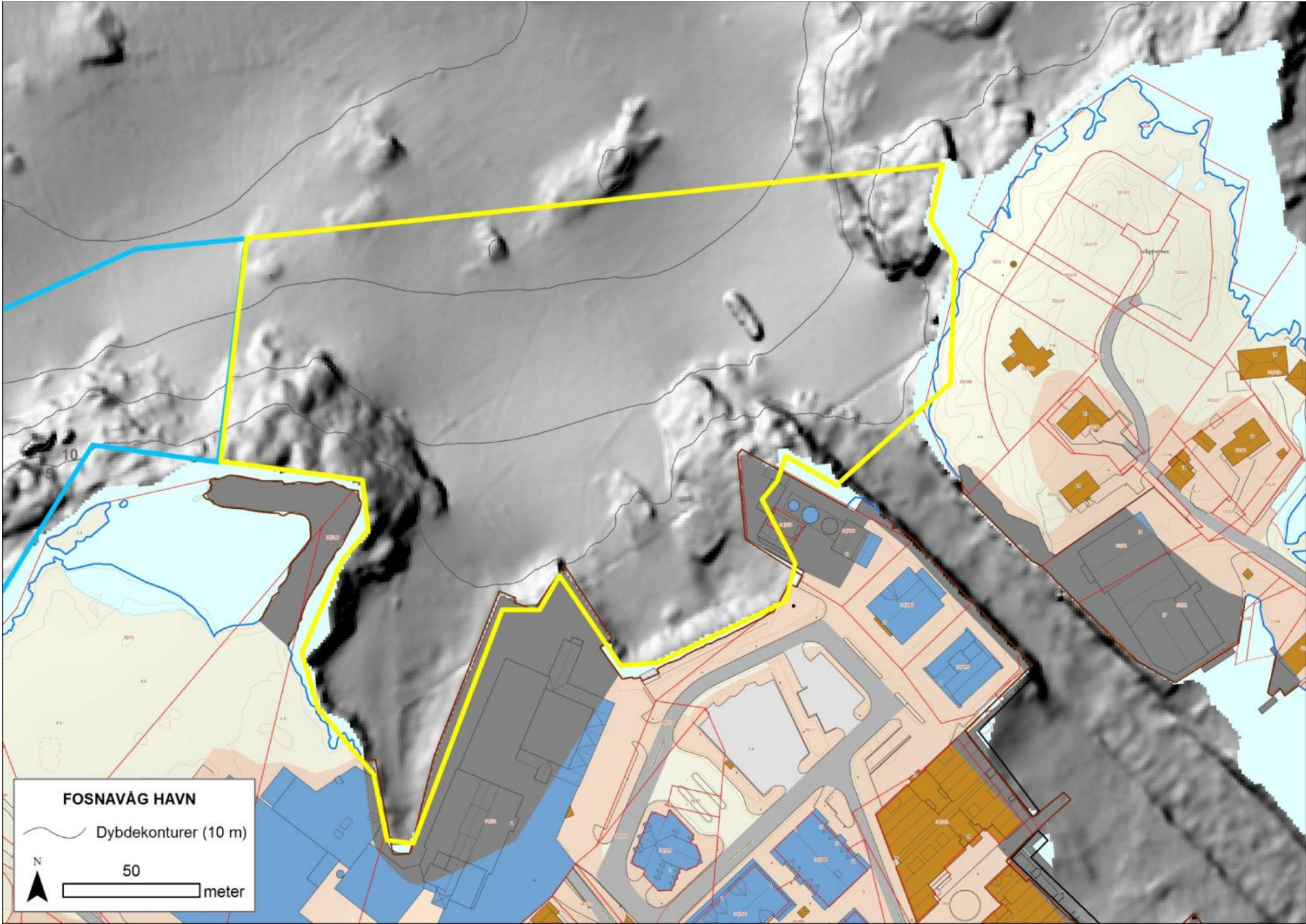


 Videolinje
1508038

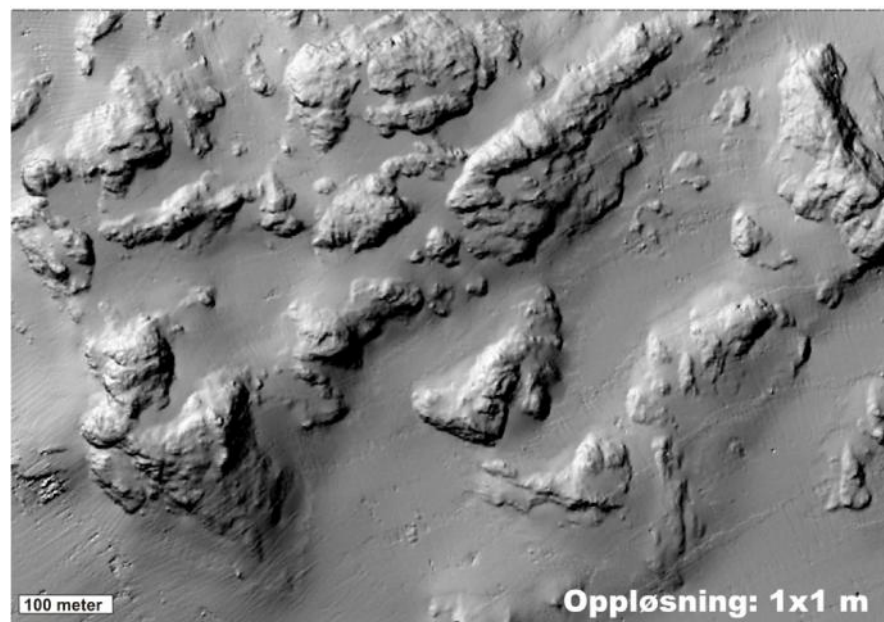
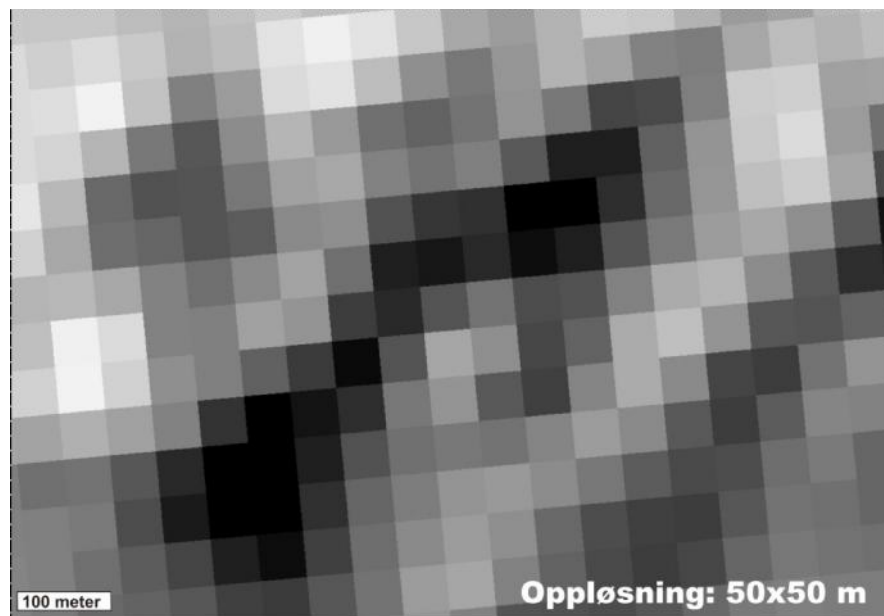


NORGES GEOLOGISKE UNDERSØKELSE
- NGU -

Detaljerte dybdedata
fra Kartverket



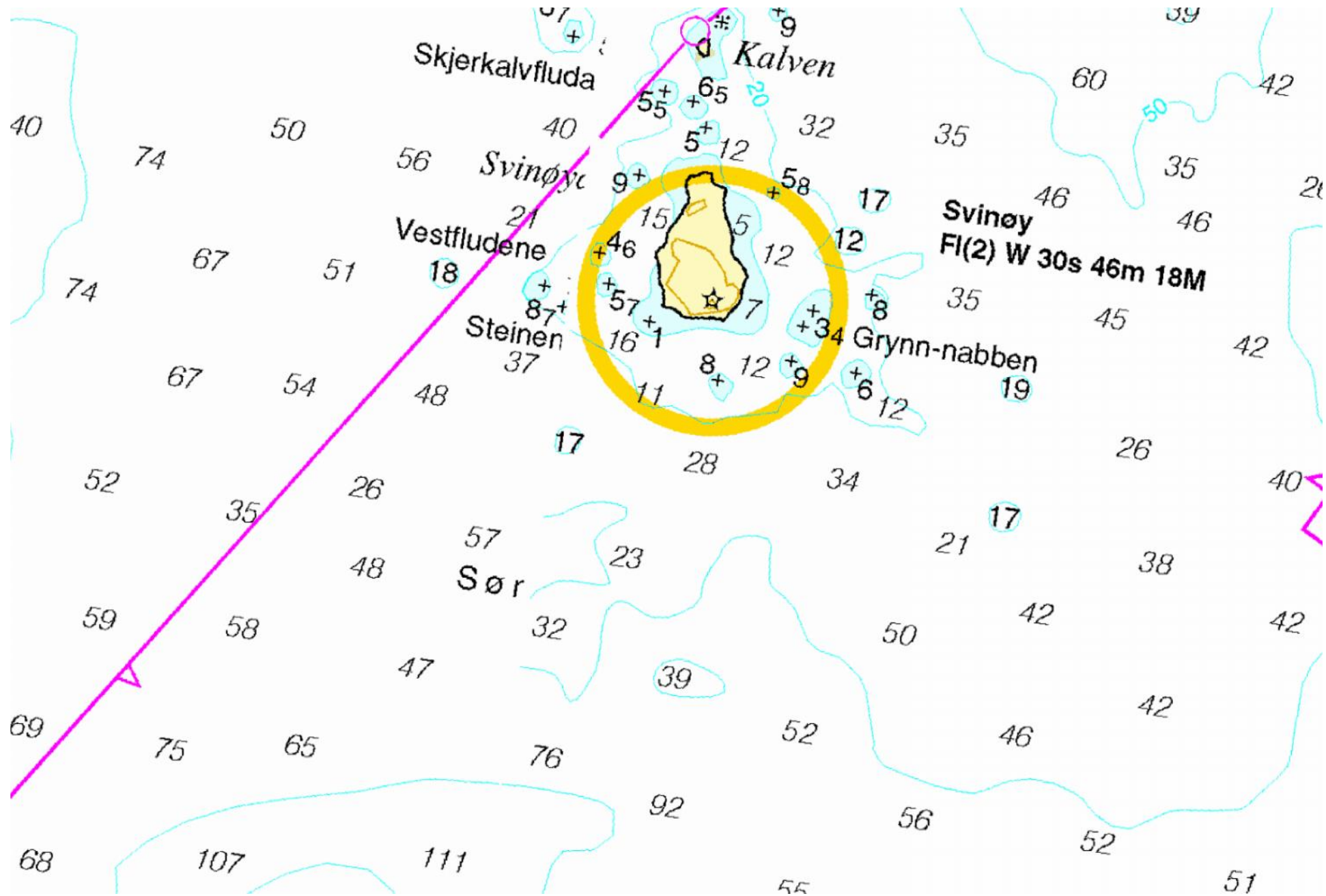


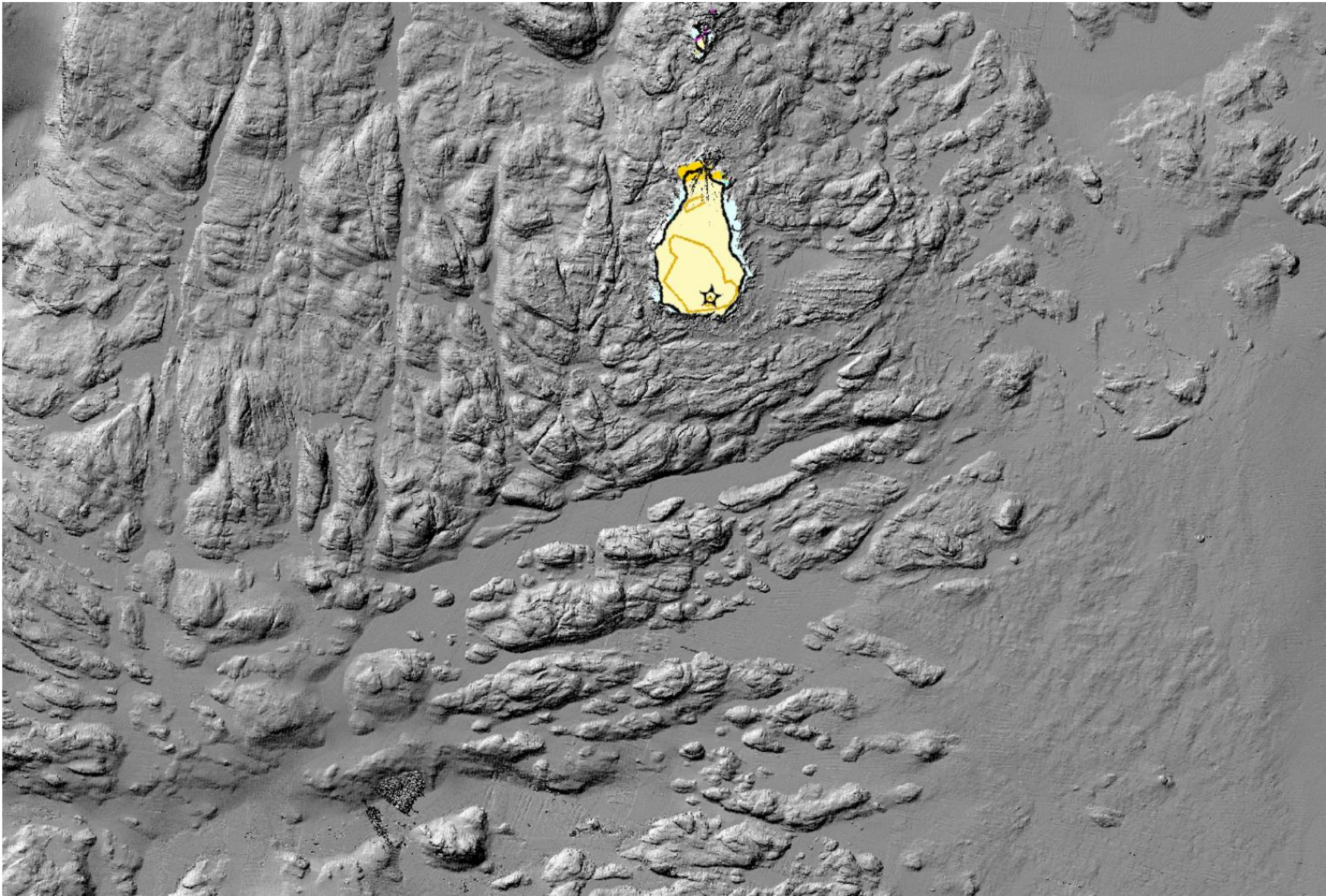


båen
Hombåen
Nordre Gubbun
Søre Gubbun
Bræken
Rundafu
Raudestakken
Leikfude









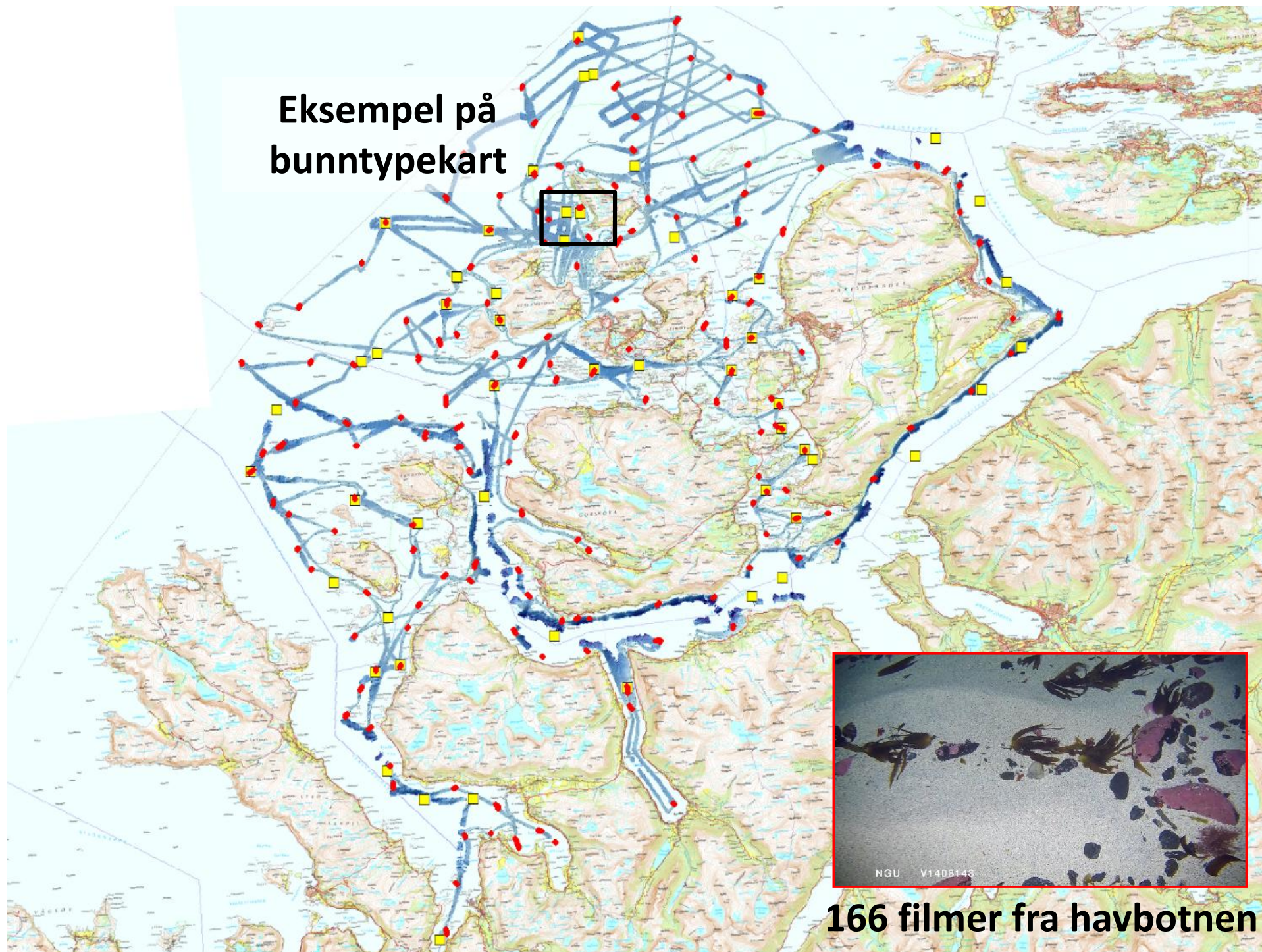




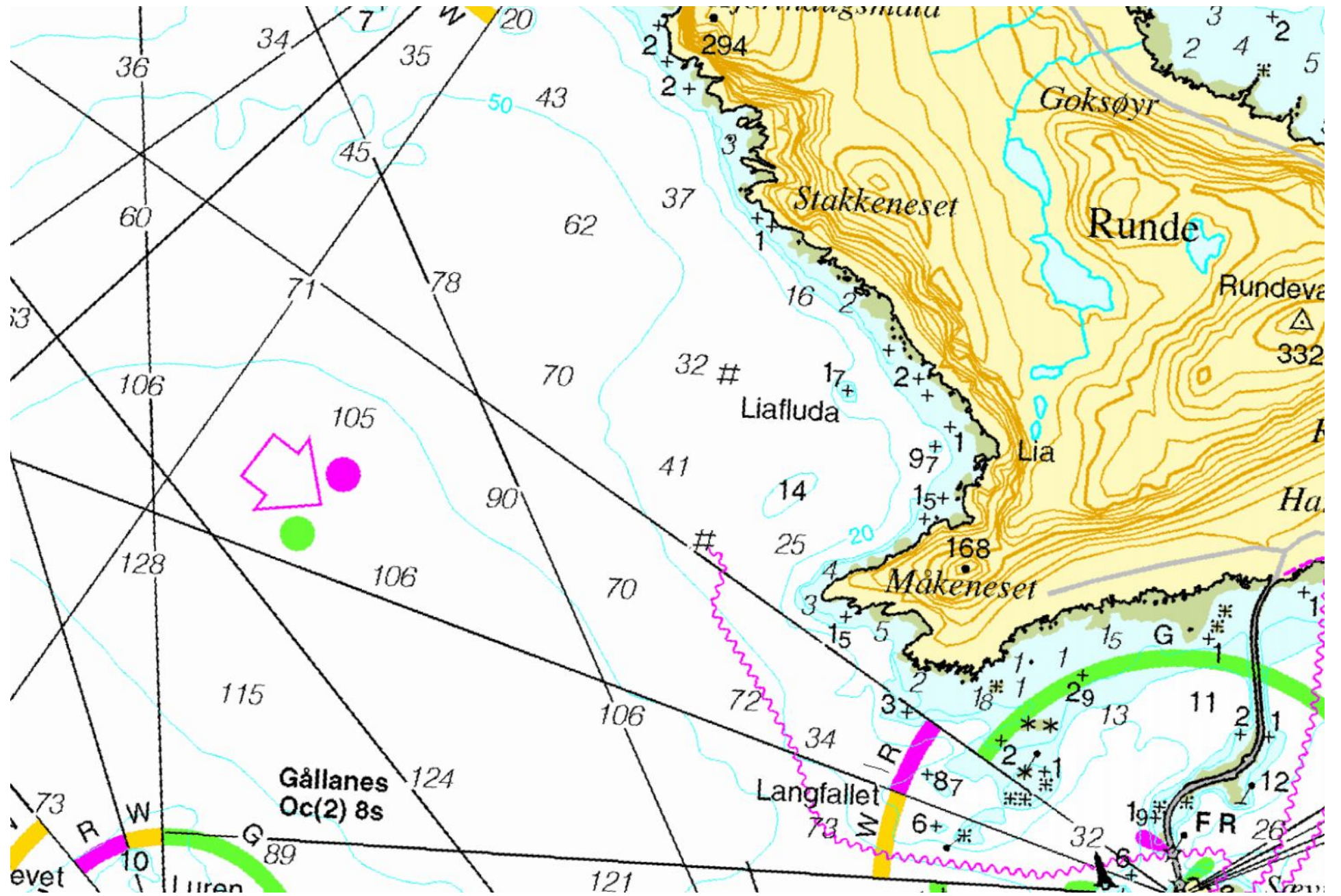


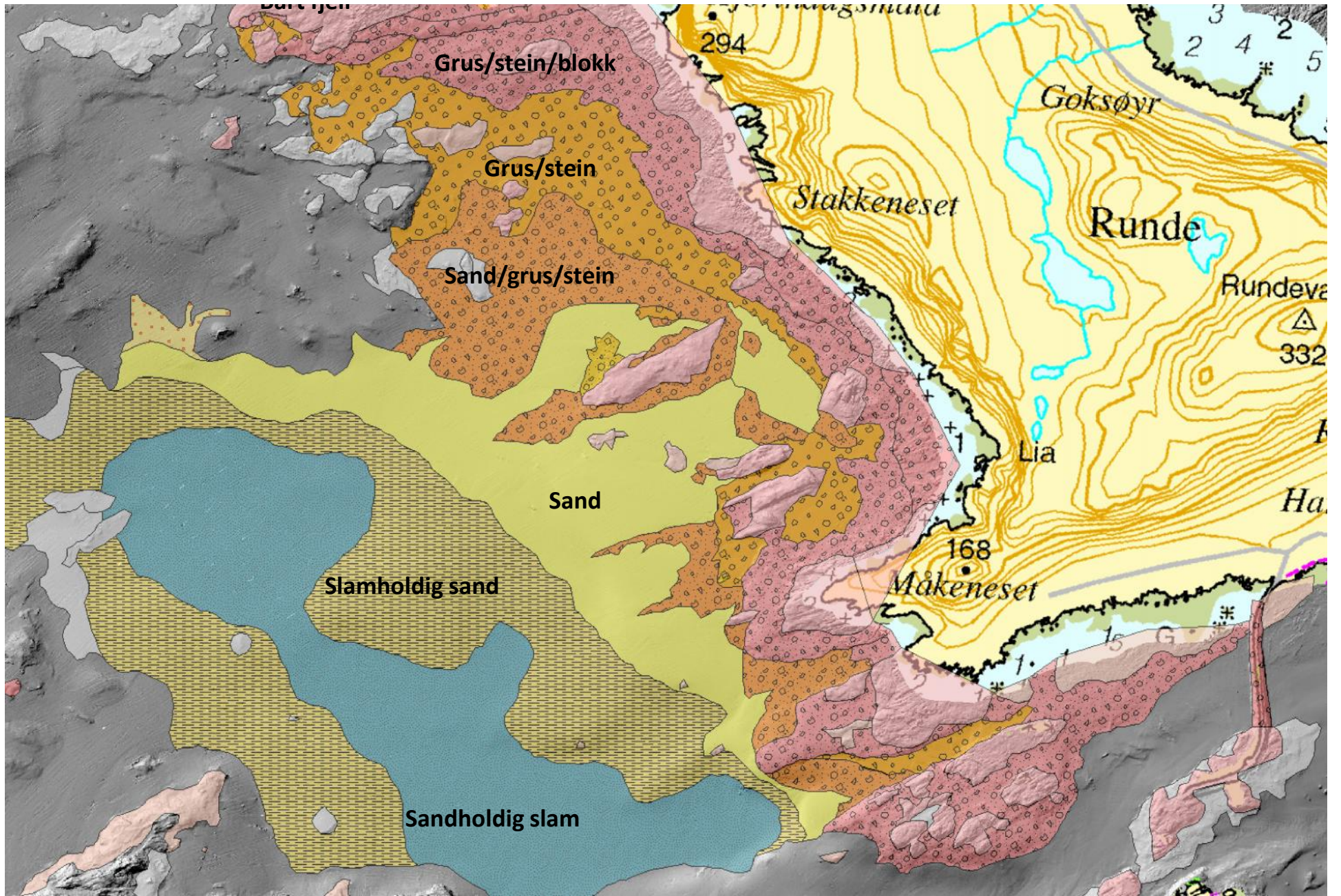


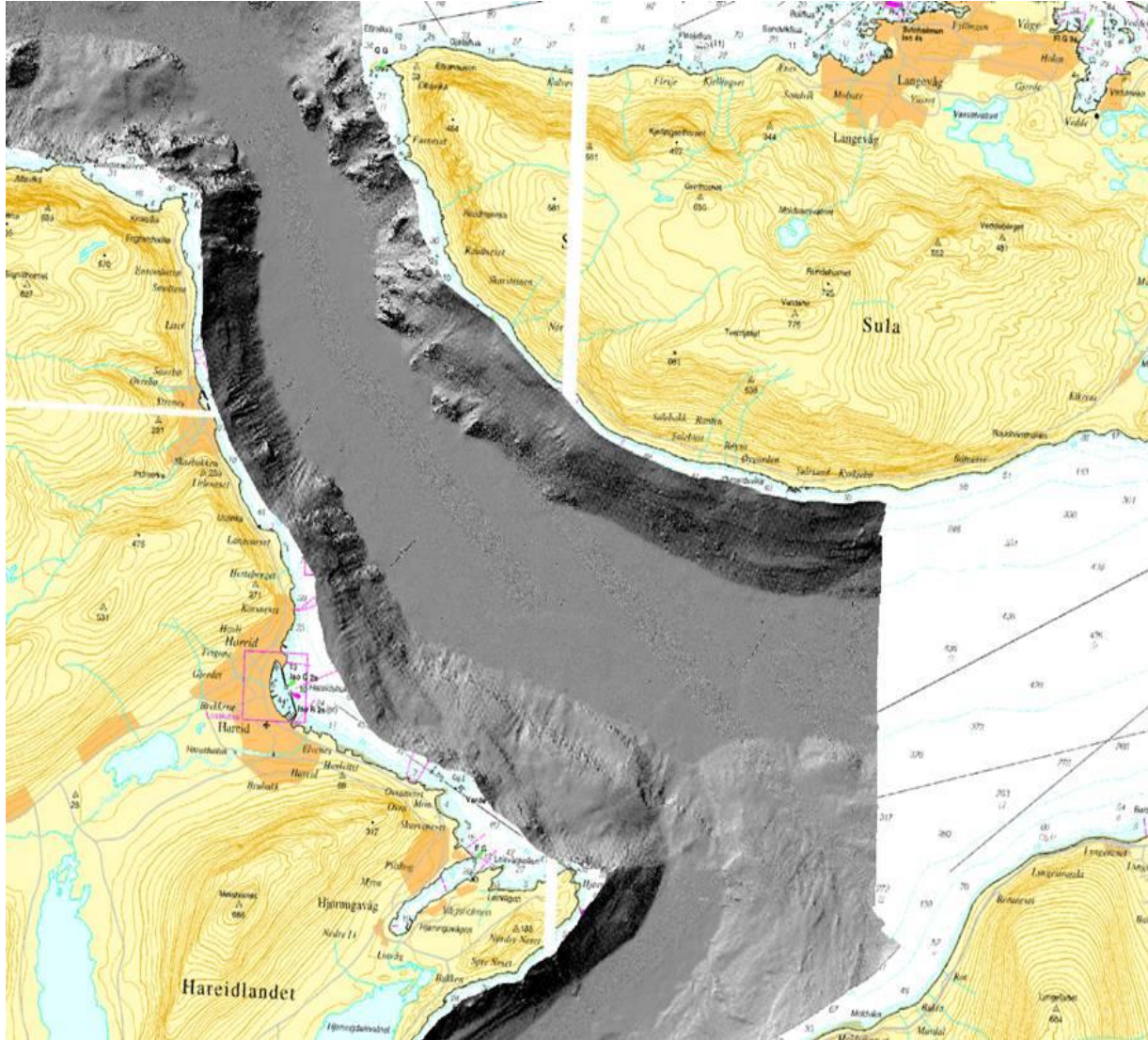
**Eksempel på
bunntypekart**



166 filmer fra havbotnen

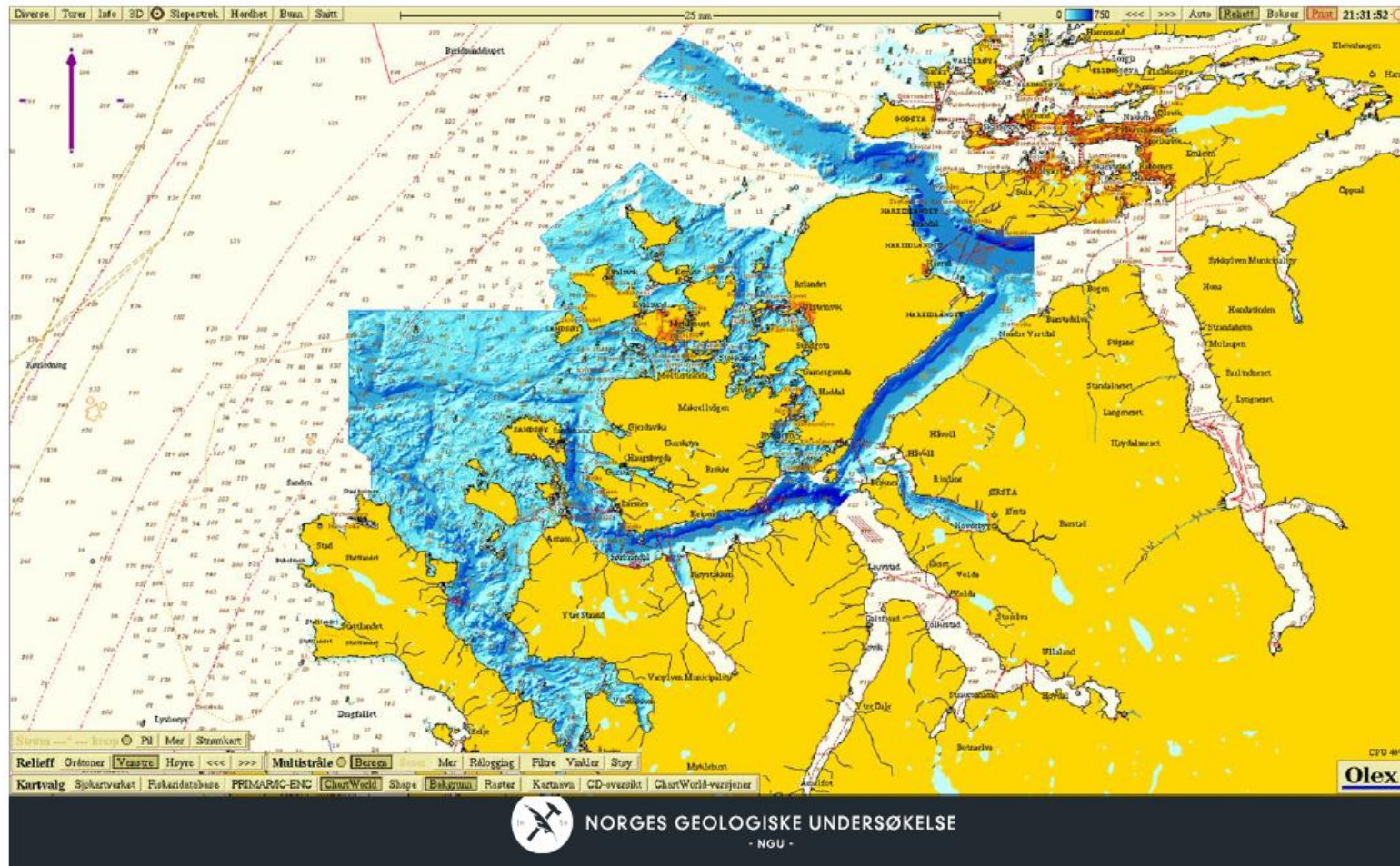






Elektroniske sjøkart for fiskarar og havbruksnæringa

Kartverket sine djupnedata på Olex



Airborne Mapping: Topographic and Bathymetric Survey within one system

